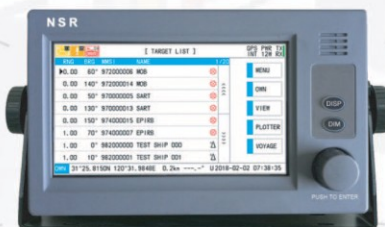


NSI-1000

AIS (Universal Automatic Identification System Equipment)

- Meet the latest IMO regulation and ITU standards
- Compatible with AIS AtoN, AIS SART and MOB
- Built-in isolated PSU with wide range input
- Support all NEMA versions for GPS/HTG input
- High stability and easy maintenance
- Type approval with MED, CCS and VR



MKD



AIS TRANSPONDER

- Fully complying with the latest international regulations, IMO MSC.74 (69) , ITU-R M.1371-5, IEC 61993-2, etc.
- 7 inch, color LCD, touch screen operation with adjustable contrast and brilliance.
- Interface for RADAR, ECDIS, ECS, GYRO and external GPS equipment.



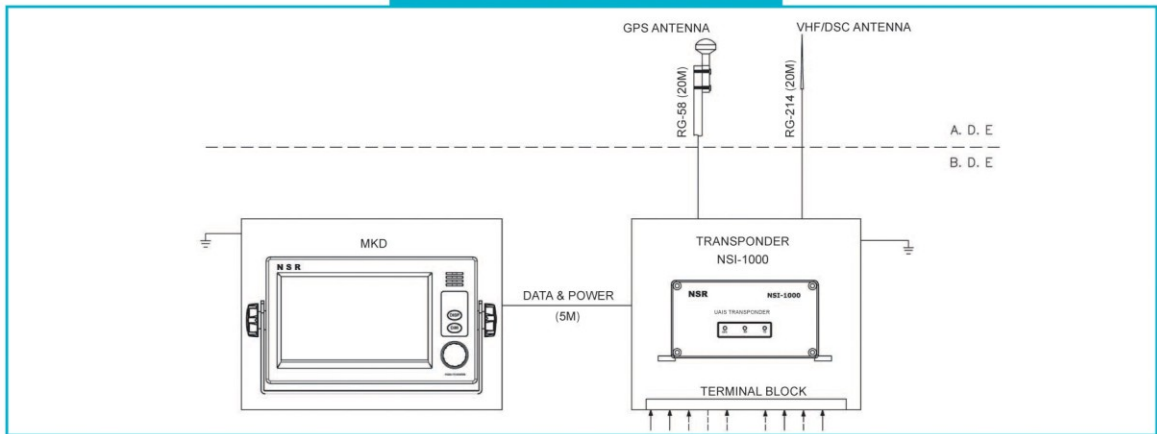
SPECIFICATIONS

- Frequency: 156.025 ~ 162.025 MHz
- Default Channel: CH2087 (161.975MHz) , CH2088 (162.025MHz)
- DSC Channel: CH70 (156.525 MHz)
- TX Power: 12.5W (High) / 1W (Low)
- I/O Interface: Input RS422×3, Output RS422×4
- Power Supply: 24VDC (12V~ 38V)
- Size: 81 (H) × 174 (W) × 257 (D) mm
- Weight: 2.3kg (Transponder)
1.25kg (MKD)

EQUIPMENT LIST

- **STANDARD**
 - Transponder 1pc
 - MKD 1pc
 - GPS Antenna (cable length=20m) 1pc
 - Accessories 1set
- **OPTIONS**
 - NES-2008 Plotter 1pc
 - NES-2010 Plotter 1pc
 - VHF Antenna 1pc
 - Pilot Plug 1pc
 - Flush Mount Brackets for MKD 1set

SYSTEM DIAGRAM



SIZE DIMENSION

